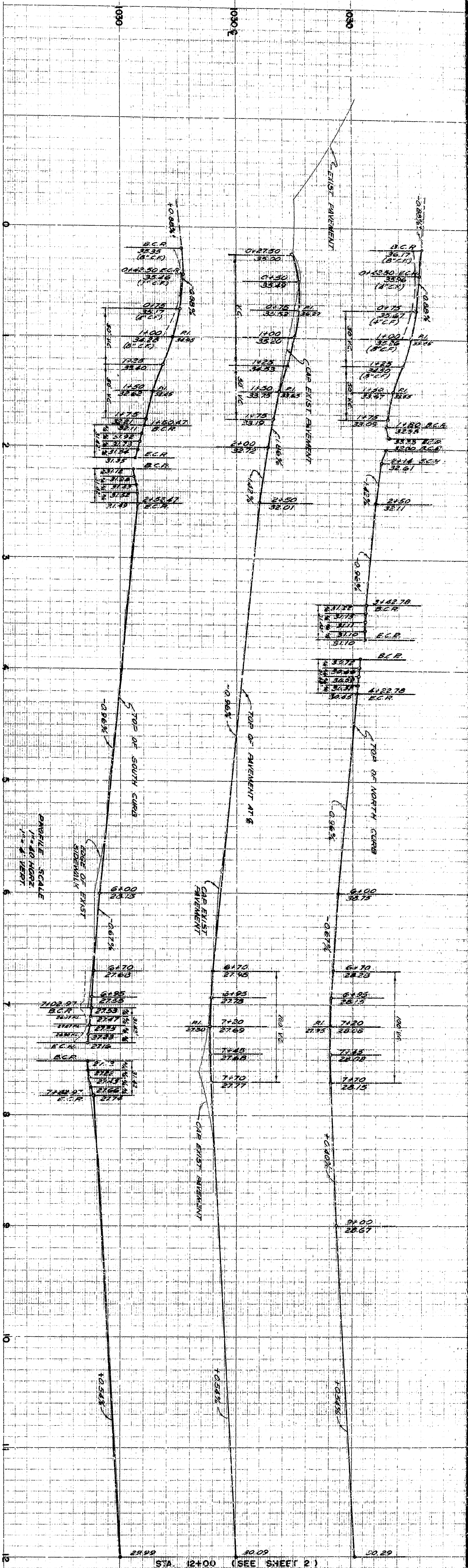


- NOTES:
1. WATER METERS & FIRE HYDRANTS TO BE RELOCATED
 2. *- TO BE RELOCATED BY OTHERS
 3. REMOVE ALL TREES CLOSER THAN 2 TO CURB
 4. STREET SIGNS TO BE RELOCATED UNDER THIS CONTRACT AS DIRECTED BY ENGINEER
 5. ADJUST ALL GROUND MARKS TO GRADE
 6. ALL CONCRETE SHALL BE 3000 PSI

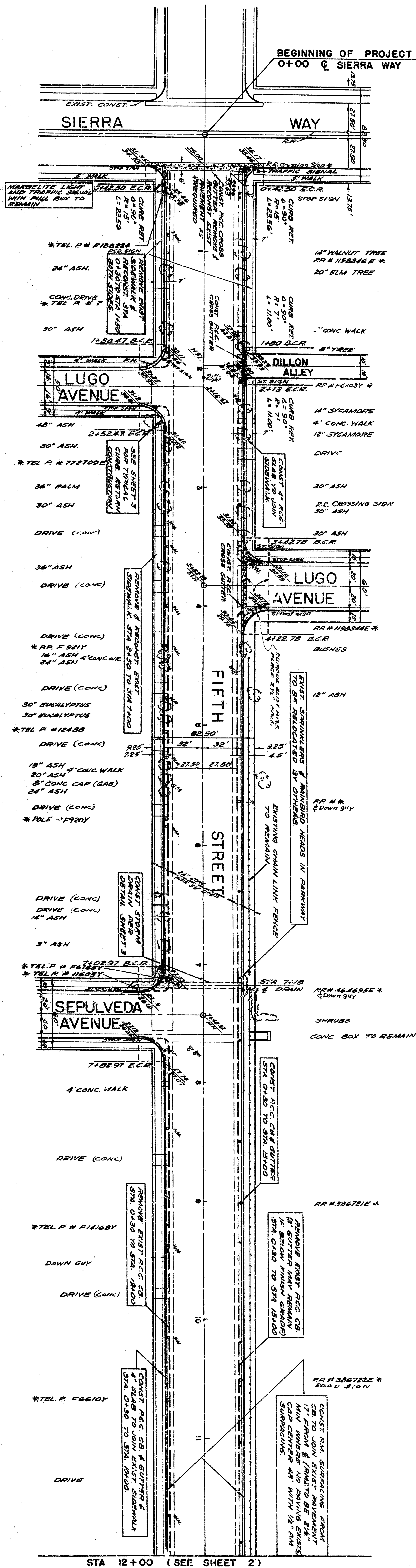
NESTE, PACE & ASSOCIATES
CONSULTING CIVIL ENGINEERS
288 FIFTH ST. 94107 BERKELEY, CALIF.

DEPARTMENT OF ENGINEERING
CITY OF SAN BERNARDINO
FIFTH STREET
SIERRA WAY TO WITERN
SURFACING, SIDEWALKS, & UTILITIES



1" = 10'
1" = 100'
1" = 1000'

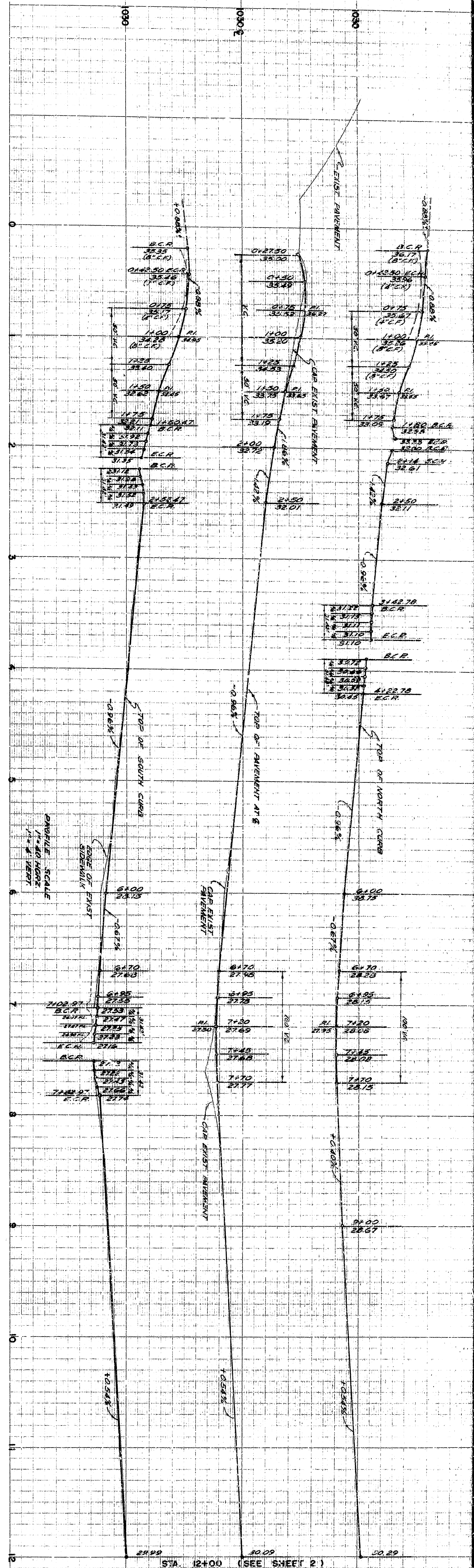
REPRODUCED FROM ORIGINAL DRAWING



- NOTES:
1. WATER METERS & FIRE HYDRANTS TO BE RELOCATED
 2. * - TO BE RELOCATED BY OTHERS
 3. REMOVE ALL TREES CLOSER THAN 2 TO CURB
 4. STREET SIGNS TO BE RELOCATED UNDER THIS CONTRACT AS DIRECTED BY ENGINEER
 5. ADJUST ALL SIDEWALKS TO GRADE
 6. ALL CONCRETE TO BE 3000 PSI

NESTE, PACE & ASSOCIATES
CONSULTING CIVIL ENGINEERS
288 FIFTH ST. 94107 BERKELEY, CALIF.

DEPARTMENT OF ENGINEERING
CITY OF SAN BERNARDINO
FIFTH STREET
SIERRA WAY TO WESTERN
SURFACING, SIDEWALKS, & UTILITIES



AS NOTED
DATE: 10/20/83
BY: [Signature]
CHECKED: [Signature]
DATE: 10/20/83

REPRODUCED FROM ORIGINAL DRAWING